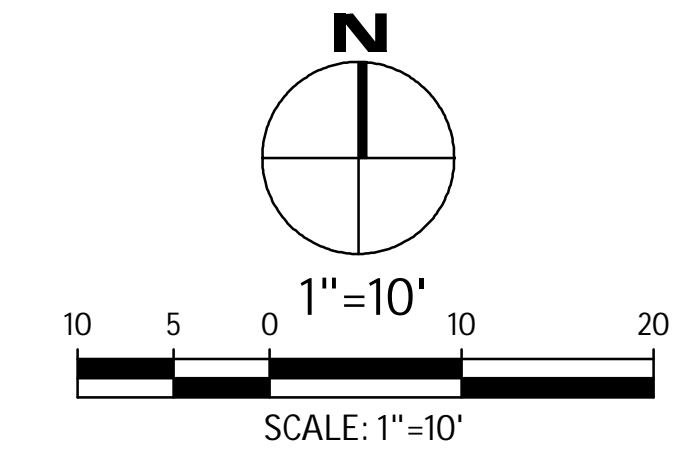
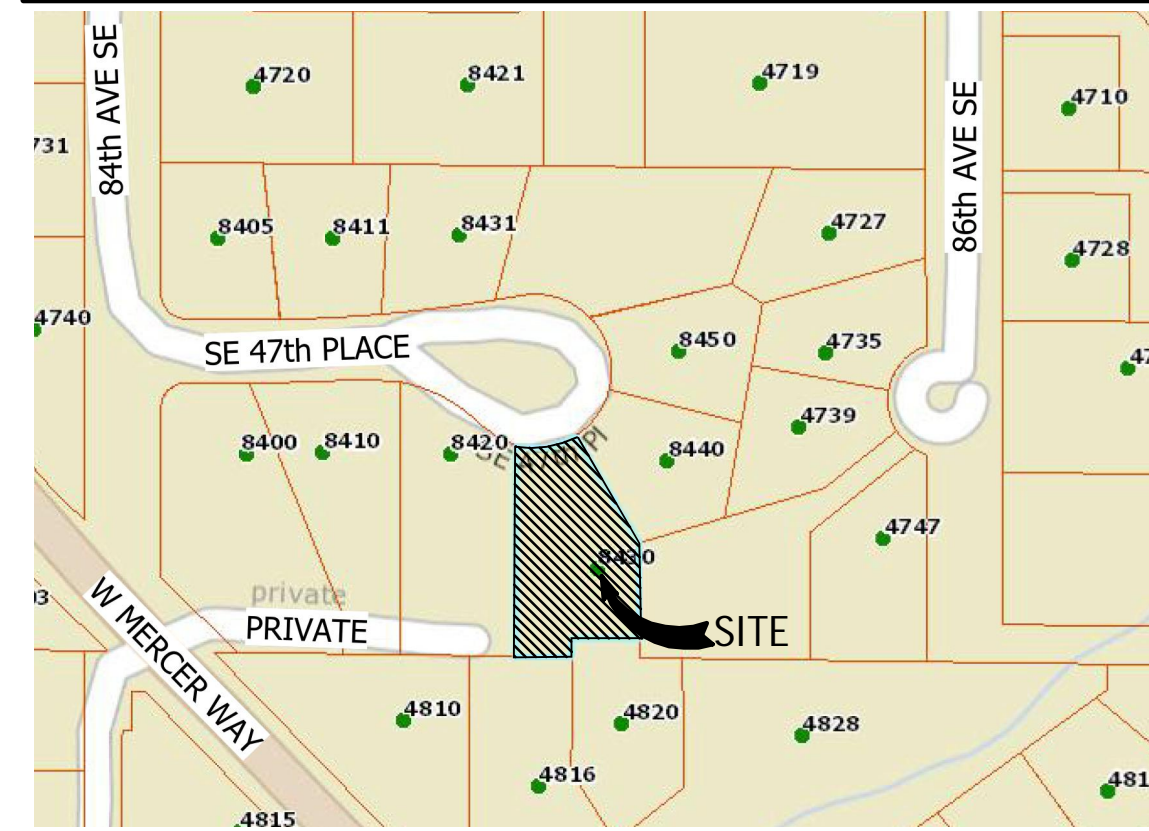


VICINITY MAP



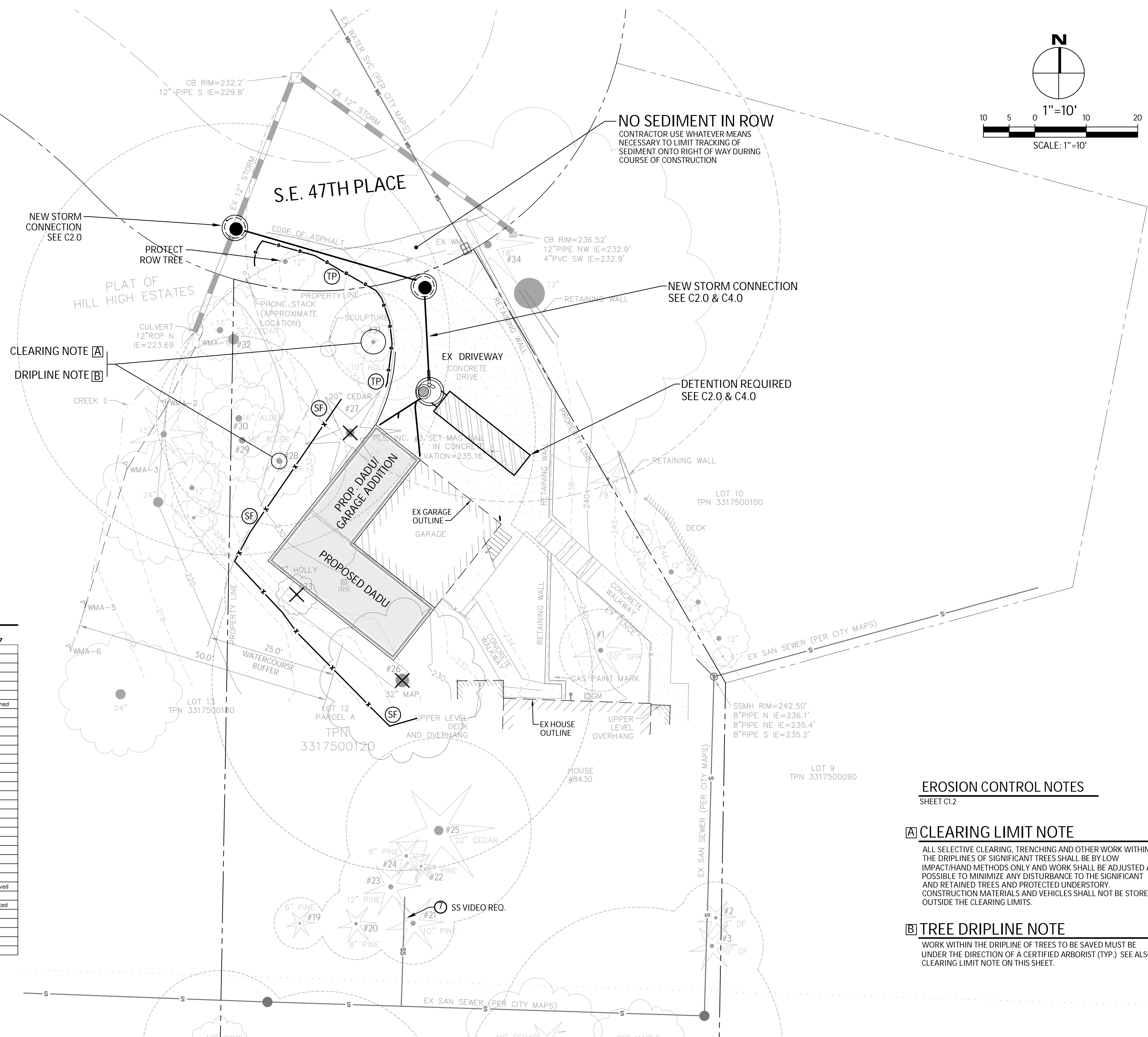
EROSION CONTROL LEGEND

- LIMITS OF DISTURBANCE**
- FILTER FABRIC FENCE (SILT FENCE) (SF)
 - STABILIZED CONSTRUCTION ENTRANCE (CE)
 - CATCH BASIN INLET PROTECTION (IP)
 - INTERCEPTOR SWALE SEE COR DWG 504 TYPE A TEMPORARY SWALE (IS)
 - TREE PROTECTION FENCING (TP)
 - CHECK DAM (CD)
 - STRAW WATTLES (SW)
 - PLASTIC COVERING (PC)
 - COMPOST SOCK (CS)
- USE AS NEEDED
COVER EXPOSED AREAS WITHIN MERCER ISLAND TIME LIMIT
SEDIMENT CONTROL OPTION RECOMMENDED IN LIEU OF SILT FENCE

TREE TABLE

TREE EVALUATION DATA						November 27, 2017
Tree #	Species	dbh	Dripline	Condition	Notes	Status
1	Norway spruce (Picea abies)	10	16	1	Young and vigorous, good condition and health	To be retained
2	Douglas fir (Pseudotsuga menziesii)	8	14	1	Young and vigorous, good condition and health	To be retained
3	Douglas fir (Pseudotsuga menziesii)	10	20	1	Young and vigorous, good condition and health	To be retained
4	Bigleaf maple (Acer macrophyllum)	20	56	2	Multi-trunked, generally good condition	To be retained
5	Western red cedar (Thuja plicata)	10	14	1	Young and vigorous, good condition and health	To be retained
6	Lombardy poplar (Populus nigra 'Italica')	30	24	3	Moderate branch dieback	Exceptional. To be retained
7	Douglas fir (Pseudotsuga menziesii)	12	22	1	Young and vigorous, good condition and health	To be retained
8	Western red cedar (Thuja plicata)	10	16	1	Young and vigorous, good condition and health	To be retained
9	Western red cedar (Thuja plicata)	12	20	1	Young and vigorous, good condition and health	To be retained
10	Western red cedar (Thuja plicata)	12	18	1	Young and vigorous, good condition and health	To be retained
11	Western red cedar (Thuja plicata)	12	18	1	Young and vigorous, good condition and health	To be retained
12	Douglas fir (Pseudotsuga menziesii)	12	20	1	Young and vigorous, good condition and health	To be retained
13	Douglas fir (Pseudotsuga menziesii)	16	28	1	Young and vigorous, good condition and health	To be retained
14	Douglas fir (Pseudotsuga menziesii)	12	24	1	Young and vigorous, good condition and health	To be retained
15	Deodar cedar (Cedrus deodara)	22	48	2	Generally good condition, older	To be retained
16	Douglas fir (Pseudotsuga menziesii)	12	26	1	Young and vigorous, good condition and health	To be retained
17	Silver birch (Betula pendula)	14	32	1	Young and vigorous, good condition and health	To be retained
18	Silver birch (Betula pendula)	8	30	1	Young and vigorous, good condition and health	To be retained
19	Austrian black pine (Pinus nigra)	6	10	1	Young and vigorous, good condition and health	To be retained
20	Austrian black pine (Pinus nigra)	8	14	1	Young and vigorous, good condition and health	To be retained
21	Austrian black pine (Pinus nigra)	10	16	1	Young and vigorous, good condition and health	To be retained
22	Austrian black pine (Pinus nigra)	6	12	1	Young and vigorous, good condition and health	To be retained
23	Austrian black pine (Pinus nigra)	12	20	1	Young and vigorous, good condition and health	To be retained
24	Austrian black pine (Pinus nigra)	8	12	1	Young and vigorous, good condition and health	To be retained
25	Western red cedar (Thuja plicata)	22	36	2	Generally good condition, older	To be retained
26	Bigleaf maple (Acer macrophyllum)	32	74	3	Multi-trunked, moderate branch dieback	Exceptional. To be removed
27	Western red cedar (Thuja plicata)	20	36	2	Generally good condition, older	To be removed
28	Red alder (Alnus rubra)	14	26	3	Moderate branch dieback	To be retained - Impacted
29	Red alder (Alnus rubra)	16	30	3	Moderate branch dieback	To be retained
30	Red alder (Alnus rubra)	16	32	3	Moderate branch dieback	To be retained
31	English holly (Ilex aquifolium)	10	18	1	Young and vigorous, good condition and health	To be retained
32	Deodar cedar (Cedrus deodara)	20	42	2	Generally good condition, older	Off-site
33	English holly (Ilex aquifolium)	8	14	1	Young and vigorous, good condition and health	To be removed

Tree # - Number of tree as assigned on inventory map
 Species - Genus and species
 Size - Diameter in inches at 4.5' above grade
 Dripline - Diameter in feet of tree crown spread/dripline
 Condition - Rating scale of tree condition
 1=Excellent condition and health; 2=Generally good condition and health; 3=Fair condition and health, some defects; 4=Poor condition and health or dead, to be removed.
 Notes - Notes on general tree condition and health and any defects present in the trunk or crown.
 Status - To be removed or retained



EROSION CONTROL NOTES
SHEET C1.2

[A] CLEARING LIMIT NOTE
 ALL SELECTIVE CLEARING, TRENCHING AND OTHER WORK WITHIN THE DRIPLINES OF SIGNIFICANT TREES SHALL BE BY LOW IMPACT/HAND METHODS ONLY AND WORK SHALL BE ADJUSTED AS POSSIBLE TO MINIMIZE ANY DISTURBANCE TO THE SIGNIFICANT AND RETAINED TREES AND PROTECTED UNDERSTORY. CONSTRUCTION MATERIALS AND VEHICLES SHALL NOT BE STORED OUTSIDE THE CLEARING LIMITS.

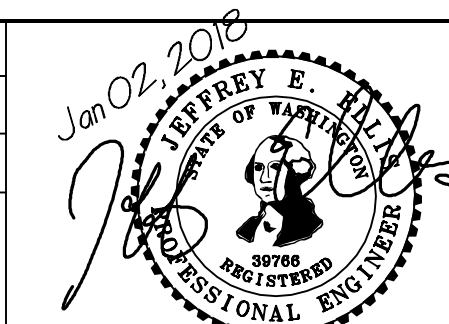
[B] TREE DRIPLINE NOTE
 WORK WITHIN THE DRIPLINE OF TREES TO BE SAVED MUST BE UNDER THE DIRECTION OF A CERTIFIED ARBORIST (TYP.) SEE ALSO CLEARING LIMIT NOTE ON THIS SHEET.

NO.	DATE	BY	REVISIONS

APPLICANT:
TIM COULTER ON BEHALF
OF CRAIG PAZARENA



DATE: Jan 02, 2018
 JOB#: 1666
 DRAFTED: CH DESIGN: DE
 DIGITAL SIGNATURE



CIVIL ENGINEERING SOLUTIONS
 102 NW CANAL STREET SEATTLE, WA 98107
 PHONE: 206.930.0342 DUFFY@CESOLUTIONS.US

EROSION CONTROL PLAN
 PAZARENA RESIDENCE
 8430 SE 47th PLACE, MERCER ISLAND, WA 98040

DRAWING NO:
C1.0
 APN 331750-0120

RECOMMENDED CONSTRUCTION SEQUENCE

A DETAILED CONSTRUCTION SEQUENCE IS NEEDED TO ENSURE THAT EROSION AND SEDIMENT CONTROL MEASURES ARE APPLIED AT THE APPROPRIATE TIMES. A RECOMMENDED CONSTRUCTION SEQUENCE IS PROVIDED BELOW:

- HOLD AN ONSITE PRE-CONSTRUCTION MEETING.
- POST SIGN WITH NAME AND PHONE NUMBER OF ESC SUPERVISOR (MAY BE CONSOLIDATED WITH THE REQUIRED NOTICE OF CONSTRUCTION SIGN).
- FLAG OR FENCE CLEARING LIMITS.
- INSTALL CATCH BASIN PROTECTION, IF REQUIRED.
- GRADE AND INSTALL CONSTRUCTION ENTRANCE(S).
- INSTALL PERIMETER PROTECTION (SILT FENCE, BRUSH BARRIER, ETC.).
- CONSTRUCT SEDIMENT PONDS AND TRAPS.
- GRADE AND STABILIZE CONSTRUCTION ROADS.
- CONSTRUCT SURFACE WATER CONTROLS (INTERCEPTOR DIKES, PIPE SLOPE DRAINS, ETC.) SIMULTANEOUSLY WITH CLEARING AND GRADING FOR PROJECT DEVELOPMENT.
- MAINTAIN EROSION CONTROL MEASURES IN ACCORDANCE WITH CITY OF MERCER ISLAND STANDARDS AND MANUFACTURER'S RECOMMENDATIONS.
- RELOCATE SURFACE SURFACE WATER CONTROLS OR TESC MEASURES, OR INSTALL NEW MEASURES SO THAT AS SITE CONDITIONS CHANGE, THE TESC IS ALWAYS IN ACCORDANCE WITH CITY OF MERCER ISLAND TESC REQUIREMENTS.
- COVER ALL AREAS THAT WILL BE UN-WORKED FOR MORE THAN SEVEN DAYS DURING THE DRY SEASON (MAY 1 TO SEPT 30) OR TWO DAYS DURING THE WET SEASON (OCT 1 TO APRIL 30) WITH STRAW, WOOD FIBER MULCH, COMPOST, PLASTIC SHEETING, OR EQUIVALENT.
- STABILIZE ALL AREAS WITHIN SEVEN DAYS OF REACHING FINAL GRADE.
- SEED, SOD, STABILIZE, OR COVER ANY AREAS TO REMAIN UNWORKED FOR MORE THAN 30 DAYS.
- UPON COMPLETION OF THE PROJECT, STABILIZE ALL DISTURBED AREAS AND REMOVE BMPS IF APPROPRIATE.

DENUDED AREAS REQUIREMENTS

APRIL 1 TO SEPT 30
ALL DENUDED AREAS MUST BE STABILIZED WITHIN 7 DAYS OF CONSTRUCTION. PLEASE READ ALL CITY TESC NOTES ON SHEET C1.2.

OCT 1 TO MARCH 31
ALL DENUDED AREAS MUST BE STABILIZED WITHIN 2 DAYS OF GRADING. IF AN EROSION PROBLEM ALREADY EXISTS ON THE SITE, OTHER COVER PROTECTION AND EROSION CONTROL WILL BE REQUIRED.

EROSION CONTROL NOTES

D.8.2 STANDARD ESC PLAN NOTES
THE STANDARD ESC PLAN NOTES MUST BE INCLUDED ON ALL ESC PLANS. AT THE APPLICANT'S DISCRETION, NOTES THAT IN NO WAY APPLY TO THE PROJECT MAY BE OMITTED; HOWEVER, THE REMAINING NOTES MUST NOT BE RENUMBERED. FOR EXAMPLE, IF ESC NOTE #3 WERE OMITTED, THE REMAINING NOTES SHOULD BE NUMBERED 1, 2, 4, 5, 6, ETC.

- APPROVAL OF THIS EROSION AND SEDIMENTATION CONTROL (ESC) PLAN DOES NOT CONSTITUTE AN APPROVAL OF PERMANENT ROAD OR DRAINAGE DESIGN (E.G., SIZE AND LOCATION OF ROADS, PIPES, RESTRICTORS, CHANNELS, RETENTION FACILITIES, UTILITIES, ETC.).
- THE IMPLEMENTATION OF THESE ESC PLANS AND THE CONSTRUCTION, MAINTENANCE, REPLACEMENT, AND UPGRADING OF THESE ESC FACILITIES IS THE RESPONSIBILITY OF THE APPLICANT/ESC SUPERVISOR UNTIL ALL CONSTRUCTION IS APPROVED.
- THE BOUNDARIES OF THE CLEARING LIMITS SHOWN ON THIS PLAN SHALL BE CLEARLY FLAGGED BY SURVEY TAPE OR FENCING, IF REQUIRED, PRIOR TO CONSTRUCTION (SWDM APPENDIX D). DURING THE CONSTRUCTION PERIOD, NO DISTURBANCE BEYOND THE CLEARING LIMITS SHALL BE PERMITTED. THE CLEARING LIMITS SHALL BE MAINTAINED BY THE APPLICANT/ESC SUPERVISOR FOR THE DURATION OF CONSTRUCTION.
- STABILIZED CONSTRUCTION ENTRANCES SHALL BE INSTALLED AT THE BEGINNING OF CONSTRUCTION AND MAINTAINED FOR THE DURATION OF THE PROJECT. ADDITIONAL MEASURES, SUCH AS CONSTRUCTED WHEEL WASH SYSTEMS OR WASH PADS, MAY BE REQUIRED TO ENSURE THAT ALL PAVED AREAS ARE KEPT CLEAN AND TRACK OUT TO ROAD RIGHT OF WAY DOES NOT OCCUR FOR THE DURATION OF THE PROJECT.
- THE ESC FACILITIES SHOWN ON THIS PLAN MUST BE CONSTRUCTED PRIOR TO OR IN CONJUNCTION WITH ALL CLEARING AND GRADING SO AS TO ENSURE THAT THE TRANSPORT OF SEDIMENT TO SURFACE WATERS, DRAINAGE SYSTEMS, AND ADJACENT PROPERTIES IS MINIMIZED.
- THE ESC FACILITIES SHOWN ON THIS PLAN ARE THE MINIMUM REQUIREMENTS FOR ANTICIPATED SITE CONDITIONS. DURING THE CONSTRUCTION PERIOD, THESE ESC FACILITIES SHALL BE UPGRADED AS NEEDED FOR UNEXPECTED STORM EVENTS AND MODIFIED TO ACCOUNT FOR CHANGING SITE CONDITIONS (E.G. ADDITIONAL COVER MEASURES, ADDITIONAL SUMP PUMPS, RELOCATION OF DITCHES AND SILT FENCES, PERIMETER PROTECTION ETC.) AS DIRECTED BY CITY OF MERCER ISLAND.
- THE ESC FACILITIES SHALL BE INSPECTED DAILY BY THE APPLICANT/ESC SUPERVISOR AND MAINTAINED TO ENSURE CONTINUED PROPER FUNCTIONING. WRITTEN RECORDS SHALL BE KEPT OF WEEKLY REVIEWS OF THE ESC FACILITIES.
- ANY AREAS OF EXPOSED SOILS, INCLUDING ROADWAY EMBANKMENTS, THAT WILL NOT BE DISTURBED FOR TWO CONSECUTIVE DAYS DURING THE WET SEASON OR SEVEN DAYS DURING THE DRY SEASON SHALL BE IMMEDIATELY STABILIZED WITH THE APPROVED ESC METHODS (E.G., SEEDING, MULCHING, PLASTIC COVERING, ETC.).
- ANY AREA NEEDING ESC MEASURES THAT DO NOT REQUIRE IMMEDIATE ATTENTION SHALL BE ADDRESSED WITHIN SEVEN (7) DAYS.
- THE ESC FACILITIES ON INACTIVE SITES SHALL BE INSPECTED AND MAINTAINED A MINIMUM OF ONCE A MONTH DURING THE DRY SEASON, BI-MONTHLY DURING THE WET SEASON, OR WITHIN TWENTY FOUR (24) HOURS FOLLOWING A STORM EVENT.
- AT NO TIME SHALL MORE THAN ONE (1) FOOT OF SEDIMENT BE ALLOWED TO ACCUMULATE WITHIN A CATCH BASIN. ALL CATCH BASINS AND CONVEYANCE LINES SHALL BE CLEANED PRIOR TO PAVING. THE CLEANING OPERATION SHALL NOT FLUSH SEDIMENT-LADEN WATER INTO THE DOWNSTREAM SYSTEM.
- ANY PERMANENT RETENTION/DETENTION FACILITY USED AS A TEMPORARY SETTLING BASIN SHALL BE MODIFIED WITH THE NECESSARY EROSION CONTROL MEASURES AND SHALL PROVIDE ADEQUATE STORAGE CAPACITY. IF THE FACILITY IS TO FUNCTION ULTIMATELY AS AN INFILTRATION SYSTEM, THE TEMPORARY FACILITY MUST BE ROUGH GRADED SO THAT THE BOTTOM AND SIDES ARE AT LEAST THREE FEET ABOVE THE FINAL GRADE OF THE PERMANENT FACILITY.
- COVER MEASURES WILL BE APPLIED IN CONFORMANCE WITH APPENDIX D OF THE SURFACE WATER DESIGN MANUAL.
- PRIOR TO THE BEGINNING OF THE WET SEASON (OCT. 1), ALL DISTURBED AREAS SHALL BE REVIEWED TO IDENTIFY WHICH ONES CAN BE SEEDED IN PREPARATION FOR THE WINTER RAINS. DISTURBED AREAS SHALL BE SEEDED WITHIN ONE WEEK OF THE BEGINNING OF THE WET SEASON.

CITY NOTES

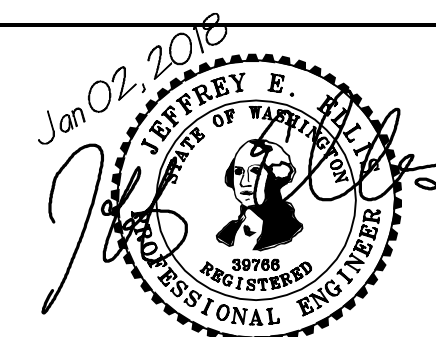
- ANY CHANGES TO THE APPROVED PLANS REQUIRES CITY APPROVAL THROUGH A REVISION.
- APPLICANT IS RESPONSIBLE FOR ANY DAMAGES TO UNDERGROUND UTILITIES CAUSED FROM THIS CONSTRUCTION.
- CATCH BASIN FILTERS SHOULD BE PROVIDED FOR ALL STORM DRAIN CATCH BASINS/INLETS DOWNSLOPE AND WITHIN 500 FEET OF THE CONSTRUCTION AREA. CATCH BASIN FILTERS SHOULD BE DESIGNED BY THE MANUFACTURER FOR USE AT CONSTRUCTION SITES AND APPROVED BY THE CITY INSPECTOR. CATCH BASIN FILTERS SHOULD BE INSPECTED FREQUENTLY, ESPECIALLY AFTER STORM EVENTS. IF THE FILTER BECOMES CLOGGED, IT SHOULD BE CLEANED OR REPLACED.
- CONTRACTORS SHALL VERIFY LOCATIONS AND DEPTHS OF UTILITIES.
- AT LEAST 48 HOURS PRIOR TO CONSTRUCTION, CALL "ONE CALL" AT 1.800.424.5555
- DO NOT BACKFILL WITH NATIVE MATERIAL ON PUBLIC RIGHT-OF-WAY. ALL MATERIAL MUST BE IMPORTED
- EROSION CONTROL: ALL "LAND DISTURBING ACTIVITY" IS SUBJECT TO PROVISIONS OF MERCER ISLAND ORDINANCE 95C-118 "STORM WATER MANAGEMENT." SPECIFIC ITEMS TO BE FOLLOWED AT YOUR SITE:
- PROTECT ADJACENT PROPERTIES FROM ANY INCREASED RUNOFF OR SEDIMENTATION DUE TO THE CONSTRUCTION PROJECT THROUGH THE USE OF APPROPRIATE "BEST MANAGEMENT PRACTICES" (BMP) EXAMPLES INCLUDE, BUT ARE NOT LIMITED TO, SEDIMENT TRAPS, SEDIMENT PONDS, FILTER FABRIC FENCES, VEGETATIVE BUFFER STRIPS OR BIOENGINEERED SWALES.
- CONSTRUCTION ACCESS TO THE SITE SHOULD BE LIMITED TO ONE ROUTE. STABILIZE ENTRANCE WITH QUARRY SPALLS TO PREVENT SEDIMENT FROM LEAVING THE SITE OR ENTERING THE STORM DRAINS.
- PREVENT SEDIMENT, CONSTRUCTION DEBRIS, PAINTS, SOLVENTS, ETC., OR OTHER TYPES OF POLLUTION FROM ENTERING PUBLIC STORM DRAINS. KEEP ALL POLLUTION ON YOUR SITE.
- ALL EXPOSED SOILS SHALL REMAIN DENUDED FOR NO LONGER THAN SEVEN (7) DAYS AND SHALL BE STABILIZED WITH MULCH, HAY, OR THE APPROPRIATE GROUND COVER. ALL EXPOSED SOILS SHALL BE COVERED IMMEDIATELY DURING ANY RAIN EVENT.
- INSTALLATION OF CONCRETE DRIVEWAYS, TREES, SHRUBS, IRRIGATION, BOULDERS, BERMS, WALLS, GATES, AND OTHER IMPROVEMENTS ARE NOT ALLOWED IN THE PUBLIC RIGHT-OF-WAY WITHOUT PRIOR APPROVAL, AND AN ENCROACHMENT AGREEMENT AND RIGHT OF WAY PERMIT FROM THE SENIOR DEVELOPMENT ENGINEER.
- OWNER SHALL CONTROL DISCHARGE OF SURFACE DRAINAGE RUNOFF FROM EXISTING AND NEW IMPERVIOUS AREAS IN A RESPONSIBLE MANNER. CONSTRUCTION OF NEW GUTTERS AND DOWNSPOUTS, DRY WELLS, LEVEL SPREADERS OR DOWNSTREAM CONVEYANCE PIPE MAY BE NECESSARY TO MINIMIZE DRAINAGE IMPACT TO YOUR NEIGHBORS. CONSTRUCTION OF MINIMUM DRAINAGE IMPROVEMENTS SHOWN OR CALLED OUT ON THIS PLAN DOES NOT IMPLY RELIEF FROM CIVIL LIABILITY FOR YOUR DOWNSTREAM DRAINAGE.
- POT HOLING THE PUBLIC UTILITIES IS REQUIRED PRIOR TO ANY GRADING ACTIVITIES LESS THAN 6" OVER THE PUBLIC MAINS (WATER, SEWER AND STORM SYSTEMS). IF THERE IS A CONFLICT, THE APPLICANT IS REQUIRED TO SUBMIT A REVISION FOR APPROVAL PRIOR TO ANY GRADING ACTIVITIES OVER THE PUBLIC MAINS.
- REMEMBER: EROSION CONTROL IS YOUR FIRST INSPECTION.
- ROOF DRAINS MUST BE CONNECTED TO THE STORM DRAIN SYSTEM AND INSPECTED BY THE PUBLIC WORKS DEPARTMENT PRIOR TO ANY BACKFILLING OF PIPE.
- SILENT FENCE: CLEAN AND PROVIDE REGULAR MAINTENANCE OF THE SILT FENCE. THE FENCE IS TO REMAIN VERTICAL AND IS TO FUNCTION PROPERLY THROUGHOUT THE TERM OF THE PROJECT.
- WORK IN PUBLIC RIGHT OF WAY REQUIRES A RIGHT-OF-WAY USE PERMIT.
- REFER TO WATER SERVICE PERMIT FOR ACTUAL LOCATION OF NEW WATER METER AND SERVICE LINE DETERMINED BY MERCER ISLAND WATER DEPARTMENT.
- THE TV INSPECTION OF THE EXISTING SIDE SEWER TO THE CITY SEWER MAIN IS REQUIRED. IF THE RESULT OF THE TV INSPECTION IS NOT IN SATISFACTORY CONDITION, AS DETERMINED BY THE CITY OF MERCER ISLAND INSPECTOR, THE REPLACEMENT OF THE EXISTING SIDE SEWER IS REQUIRED. ALTERNATELY, A PRESSURE TEST OF THE SIDE SEWER, FROM SEWER MAIN TO POINT OF CONNECTION, MAY BE SUBSTITUTED FOR THE VIDEO INSPECTION.
- NEWLY INSTALLED SIDE SEWER REQUIRES A 4 P.S.I. AIR TEST OR PROVIDE 10' OF HYDROSTATIC HEAD TEST.
- POT HOLING THE PUBLIC UTILITIES IS REQUIRED PRIOR TO ANY GRADING ACTIVITIES LESS THAN 6" OVER THE PUBLIC MAINS (WATER, SEWER AND STORM SYSTEMS). IF THERE IS A CONFLICT, THE APPLICANT IS REQUIRED TO SUBMIT A REVISION FOR APPROVAL PRIOR TO ANY GRADING ACTIVITIES OVER THE PUBLIC MAINS.
- THE LIMITS AND EXTENDS OF THE PAVEMENT IN THE PUBLIC RIGHT OF WAY SHALL BE DETERMINED BY THE CITY ENGINEER PRIOR TO FINALIZE THE PROJECT.

NO.	DATE	BY	REVISIONS

APPLICANT:
TIM COULTER ON BEHALF
OF CRAIG PAZARENA



DATE: Jan 02, 2018
JOB# 1666
DRAFTED: CH DESIGN: DE
DIGITAL SIGNATURE



102 NW CANAL STREET SEATTLE, WA 98107
PHONE: 206.930.0342 DUFFY@CESOLUTIONS.US

TESC & CITY NOTES

PAZARENA RESIDENCE
8430 SE 47th PLACE, MERCER ISLAND, WA 98040

DRAWING NO:
C1.2

APN 331750-0120

SANITARY SEWER IMPROVEMENTS

- ① -
- ② - 6" SDR 35 PVC SANITARY SEWER(SS) @ MIN 1.0%.
- ③ -
- ④ -
- ⑦ - LOCATE AND VIDEO CONDITION OF EXISTING SANITARY SIDE SEWER. REPLACE LINE IF FOUND DEFECTIVE AS DETERMINED BY CITY INSPECTOR.

WATER IMPROVEMENTS

- ⑩ -
- ⑪ - MIN 1.5" 250 PSI PRIVATE HDPE WATER (ASTM D2239) FROM METER TO HOUSE. RECOMMENDED DEPTH=36". COORDINATE HOUSE ENTRY WITH BUILDER/OWNER.
- ⑫ -
- ⑭ - POSSIBLE METER UPGRADE

STORM DRAIN

- ⑳ - 4" STORM DRAIN (3034 PVC) @ MIN 2% GRADE.
- ㉑ - 4" FOUNDATION DRAIN (3034 PVC) @ MIN 1% GRADE.
- ㉒ - 6" STORM DRAIN (3034 PVC) @ MIN 1% GRADE.
- ㉓ -
- ㉔ -
- ㉕ -
- ㉖ -

STORM DRAIN STRUCTURES

- ㉗ -
- ㉘ -
- ㉙ -
- ㉚ -
- ㉛ -
- ㉜ -
- ㉝ -
- ㉞ -
- ㉟ -
- ㊱ -
- ㊲ -
- ㊳ -
- ㊴ -
- ㊵ -
- ㊶ -
- ㊷ -
- ㊸ -
- ㊹ -
- ㊺ -
- ㊻ -
- ㊼ -
- ㊽ -
- ㊾ -
- ㊿ -
- ① - TYPE 2 48" DIA CATCH BASIN WITH SOLID MH LID
- ② -
- ③ - NDS DURASLOPE CHANNEL DRAIN OR EQUAL. MINIMUM 6" CHANNEL. VEHICLE RATED GRATE.
- ④ -
- ⑤ -
- ⑥ -
- ⑦ - 54" ID TYPE 2 MH CONTROL STRUCTURE WITH SOLID LID. SEE ALL DETAILS AND PROFILE C4.0.
- ⑧ -
- ⑨ -
- ⑩ -
- ⑪ -
- ⑫ -
- ⑬ -
- ⑭ -
- ⑮ -
- ⑯ -
- ⑰ -
- ⑱ -
- ⑲ - DETENTION PIPE: ALUMINIZED CMP @ 0.5% GRADE. SEE PLAN FOR SIZE AND CONFIGURATION. SEE PROFILE, NOTES, AND DETAILS ON C4.0.

☒ CLEARING LIMIT NOTE

ALL SELECTIVE CLEARING, TRENCHING AND OTHER WORK WITHIN THE DRIPLINES OF SIGNIFICANT TREES SHALL BE BY LOW IMPACT/HAND METHODS ONLY AND WORK SHALL BE ADJUSTED AS POSSIBLE TO MINIMIZE ANY DISTURBANCE TO THE SIGNIFICANT AND RETAINED TREES AND PROTECTED UNDERSTORY. CONSTRUCTION MATERIALS AND VEHICLES SHALL NOT BE STORED OUTSIDE THE CLEARING LIMITS.

☒ TREE DRIPLINE NOTE

WORK WITHIN THE DRIPLINE OF TREES TO BE SAVED MUST BE UNDER THE DIRECTION OF A CERTIFIED ARBORIST (TYP.) SEE ALSO CLEARING LIMIT NOTE ON THIS SHEET.

SOILS

SILTY FINE TO MEDIUM SAND WITH GRAVEL AND FINE TO MEDIUM SAND WITH GRAVEL SOILS, NATIVE GLACIAL TILL AND ADVANCE OUTWASH DEPOSITS.

SEE A FULL SERVICE SOILS REPORT BY NELSON GEOTECHNICAL ASSOCIATES, JUNE 2017.

SURVEYOR

TOPOGRAPHIC SURVEY BY:
PLS, INC.
1595 NW GILMAN BOULEVARD, #15
ISSAQUAH, WA 98027
PHONE (425) 313-9378

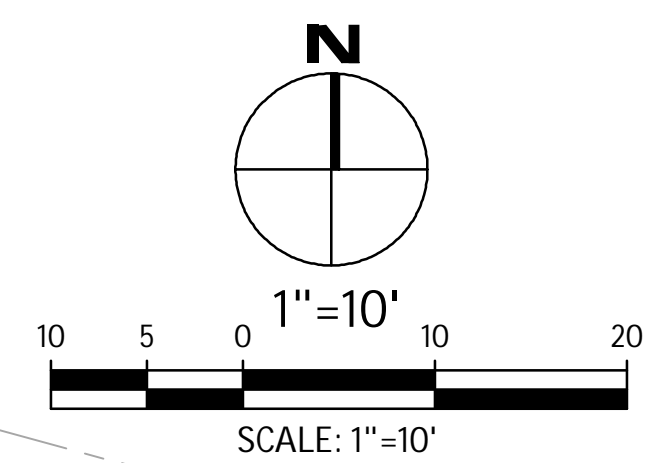
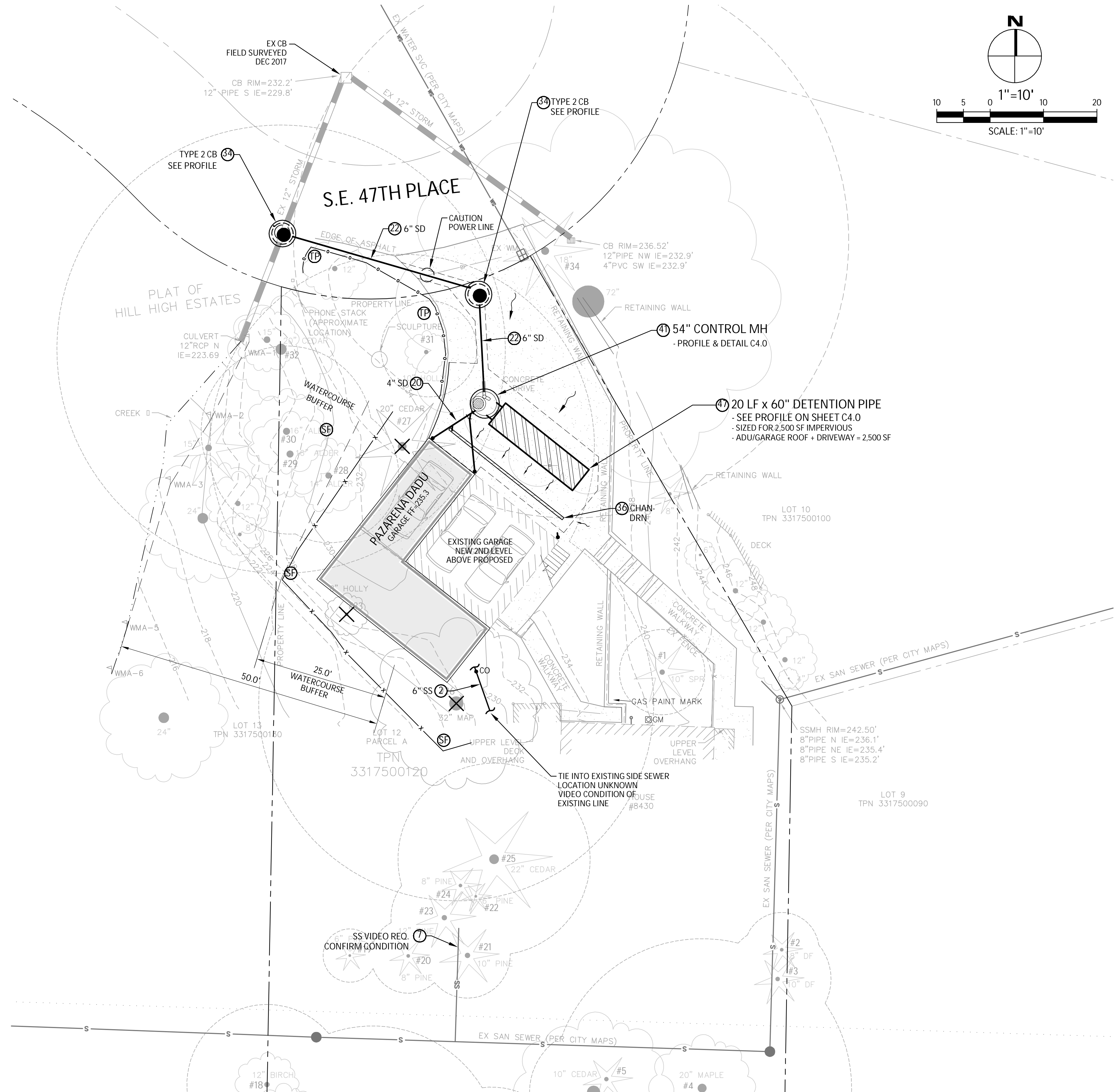
LEGAL DESCRIPTION

(PER STATUTORY WARRANTY DEED, KING COUNTY RECORDING NO. 20151215000906)

PARCEL A, CITY OF MERCER ISLAND LOT LINE REVISION M.1. SUB10-002 RECORDED UNDER RECORDING NUMBER 20110308900001, IN KING COUNTY, WASHINGTON.

DATUM

NAVD 88



NO.	DATE	BY	REVISIONS

APPLICANT:
TIM COULTER ON BEHALF
OF CRAIG PAZARENA



DATE: Jan 02, 2018
JOB#: 1666
DRAFTED: CH DESIGN: SS
DIGITAL SIGNATURE

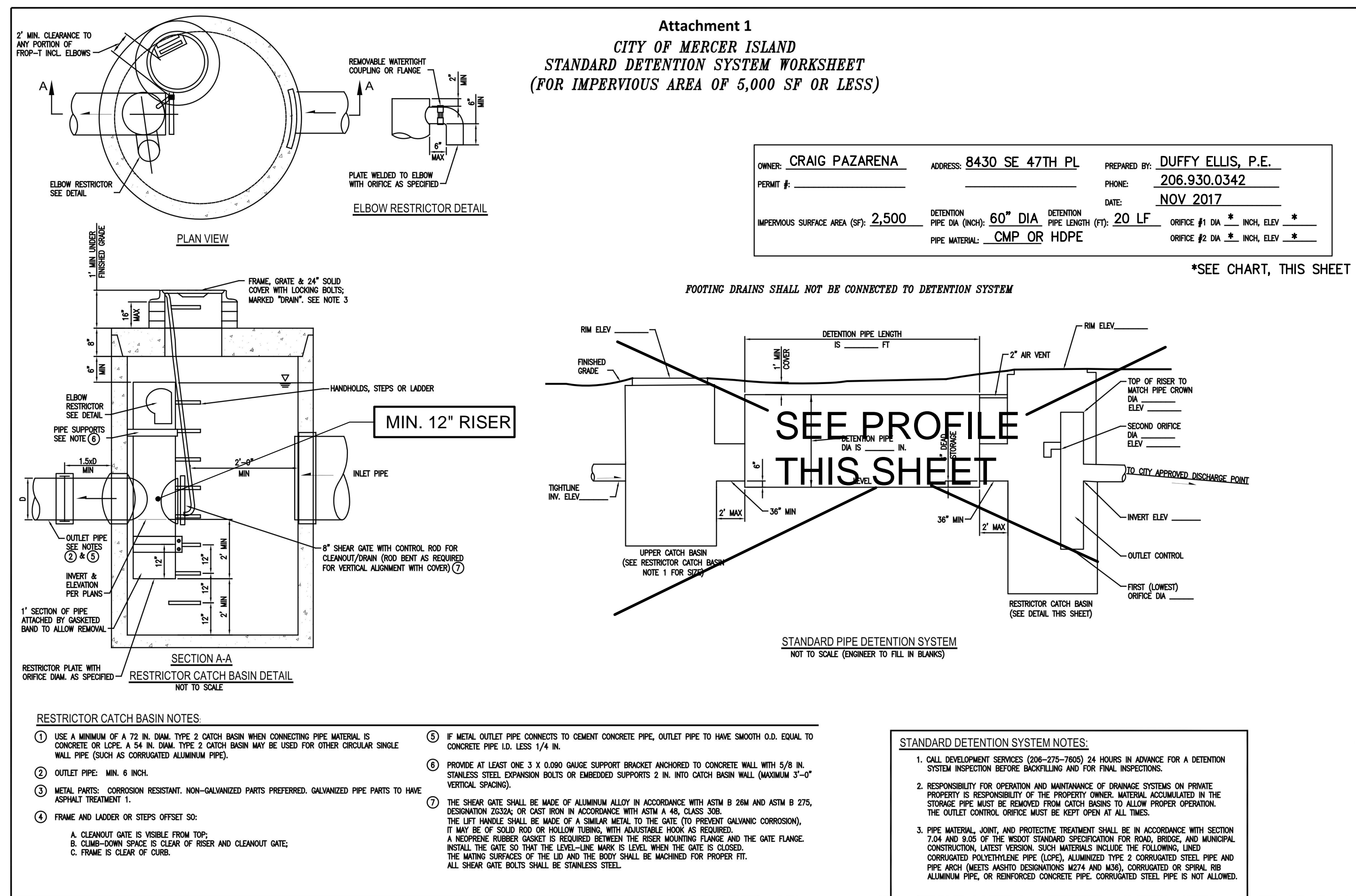


CIVIL ENGINEERING SOLUTIONS
102 NW CANAL STREET SEATTLE, WA 98107
PHONE: 206.930.0342 DUFFY@CESOLUTIONS.US

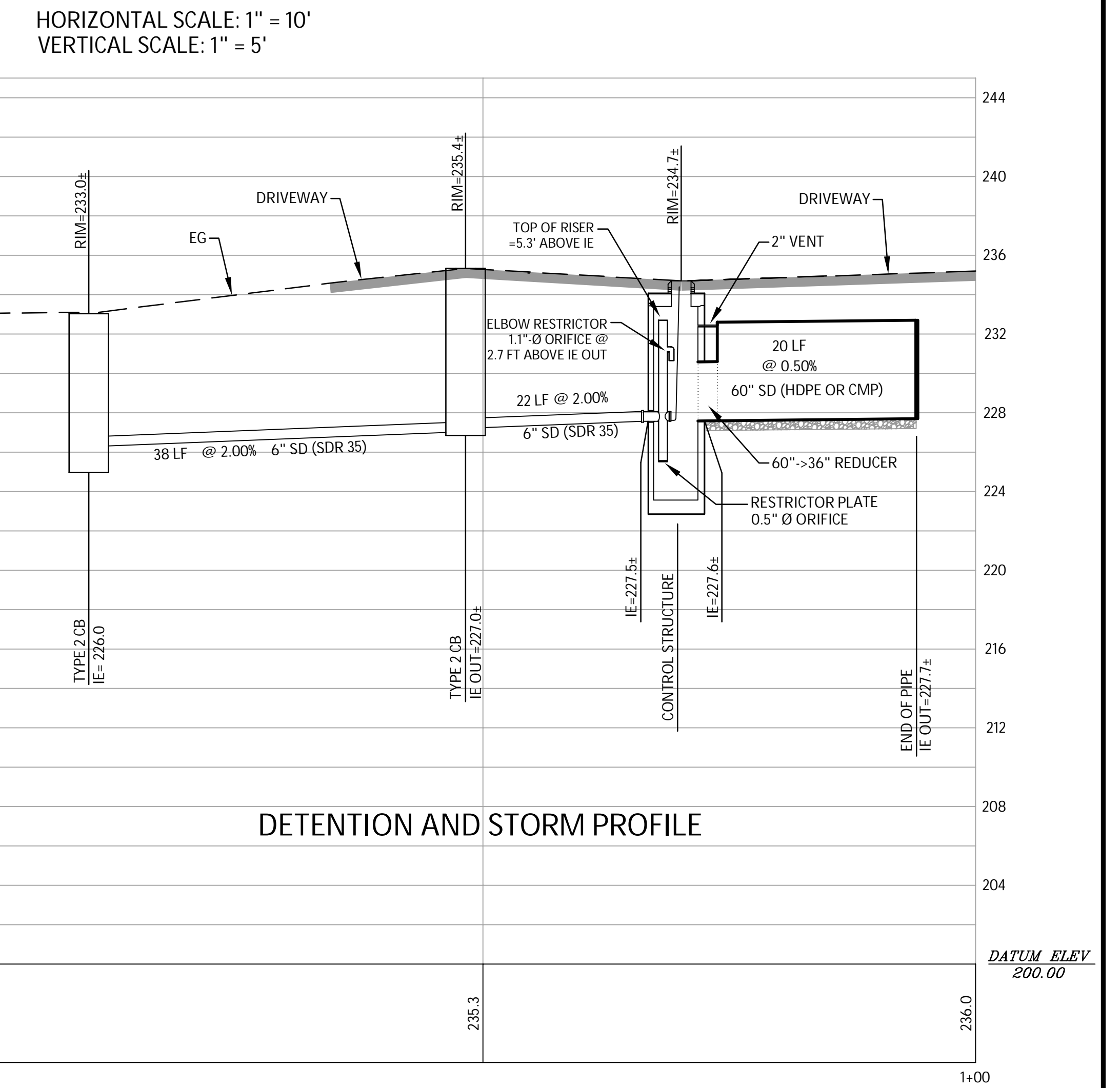
DRAINAGE / CIVIL PLAN
PAZARENA RESIDENCE
8430 SE 47th PLACE, MERCER ISLAND, WA 98040

DRAWING NO:
C2.0
APN 331750-0120

MERCER ISLAND DETENTION DETAIL



DETENTION / STORM OUTFALL PROFILE



IMPERVIOUS AREA SPREADSHEET

Impervious Area Spreadsheet	
Pazarena Addition - 8430 SE 47th Place, Mercer Island, WA 98040 - CES #1666	
Proposed Impervious Area (on-site)	
Garage/ADU Roof	1,247 total roof from architecture roof plan
Driveway, on-site	1,100 from architecture site plan
total on-site proposed =	2,347 sf

MERCER ISLAND DETENTION "TABLE 2"

TABLE 2 - STANDARD DETENTION PIPE DESIGN FOR PROJECTS BETWEEN 500 SF AND 5,000 SF IMPERVIOUS AREA (WITH 120% CORRECTION FACTOR)

Soil Type ¹	New Impervious Area (sf)														
	500 to 1,000 sf			1,001 to 2,000 sf			2,001 to 3,000 sf			3,001 to 4,000 sf			4,001 to 5,000 sf		
	Detention Pipe Size (in.) and Length (ft)			Detention Pipe Size (in.) and Length (ft)			Detention Pipe Size (in.) and Length (ft)			Detention Pipe Size (in.) and Length (ft)			Detention Pipe Size (in.) and Length (ft)		
(C)	36" 30 22	48" 18 11	60" 11 7	36" 88 43	48" 34 23	60" 22 14	36" 90 66	48" 48 36	60" 30 20	36" 120 78	48" 62 42	60" 42 26	36" 186 132	48" 90 60	60" 48 37

20 LF-60" DIA

¹Minimum diameter = 0.5 inches
²Geotechnical Analysis Required
 Basis of Sizing Assumptions:
 - Based on the Stormwater Management Manual for Puget Sound Basin (1992 Manual)
 - Converting 2nd growth forest to impervious
 - Assumes 0.5 foot sediment storage in detention pipe
 - Moderate slope
 - Includes Volume Correction Factor, assuming 120% safety factor

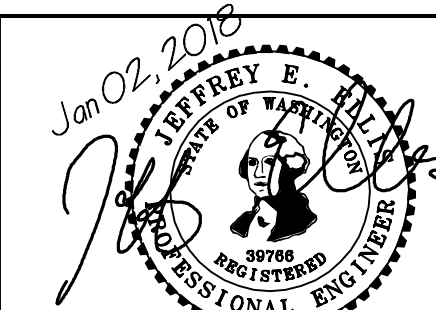
CONTROL STRUCTURE SIZING

NO.	DATE	BY	REVISIONS

APPLICANT:
TIM COULTER ON BEHALF
OF CRAIG PAZARENA



DATE: Jan 02, 2018
 JOB#: 1666
 DRAFTED: SS DESIGN: SS
 DIGITAL SIGNATURE



CIVIL ENGINEERING SOLUTIONS
 102 NW CANAL STREET SEATTLE, WA 98107
 PHONE: 206.930.0342 DUFFY@CESOLUTIONS.US

DETENTION PROFILE AND DETAIL
 PAZARENA RESIDENCE
 8430 SE 47th PLACE, MERCER ISLAND, WA 98040

DRAWING NO:
C4.0
 APN 331750-0120